

Command, Control, Battle Management and Communications (C2BMC)

- *Enables Integrated Ballistic Missile Defense*
- *Extends the Range and Performance of BMDS Assets*
- *Ensures Decision Superiority*



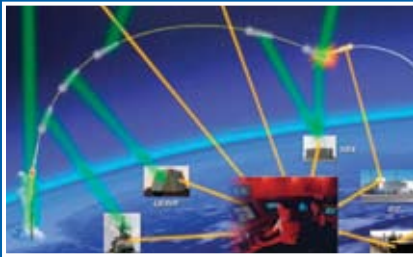
Northrop Grumman delivers capabilities essential to achieving...

THE POWER TO PROTECT



DSP/STSS/SBIRS

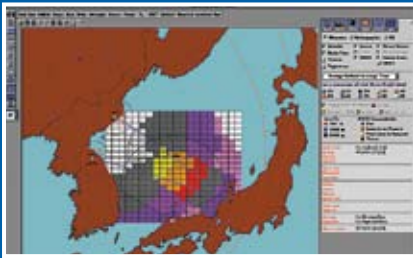
C2BMC Dynamically Integrates and Coordinates BMDS Assets to Increase System Performance Throughout the Battlespace.



Ground Based Midcourse Defense

C2BMC enables integrated ballistic missile defense.

- Enables collaborative planning, ensuring common courses of action
- Provides common situational awareness for battlespace synchronization
- Nets sensors, maximizing ability to detect and track all threats
- Coordinates weapon system engagements
- Integrates BMD capabilities through global networks



C2BMC Planner

C2BMC extends the range and performance of BMDS assets, enabling global, coordinated missile defense.

- Identifies and tracks multiple threats concurrently
- Adjusts BMDS resources dynamically to maintain multiple threats in the engagement zone through all phases of flight
- Engages multiple threats concurrently



FBX-T

C2BMC delivers decision superiority to warfighters and battlefield commanders.

- Provides situational awareness
- Evaluates threats
- Recommends courses of action
- Executes coordinated, integrated ballistic missile defense



AEGIS BMD

C2BMC Supports Element Fire Control by Providing the Integrated Capabilities of the BMDS Network of Elements.

For more information, please contact:

Northrop Grumman Mission Systems
12011 Sunset Hills Road
Reston, VA 20190
703-345-8250

