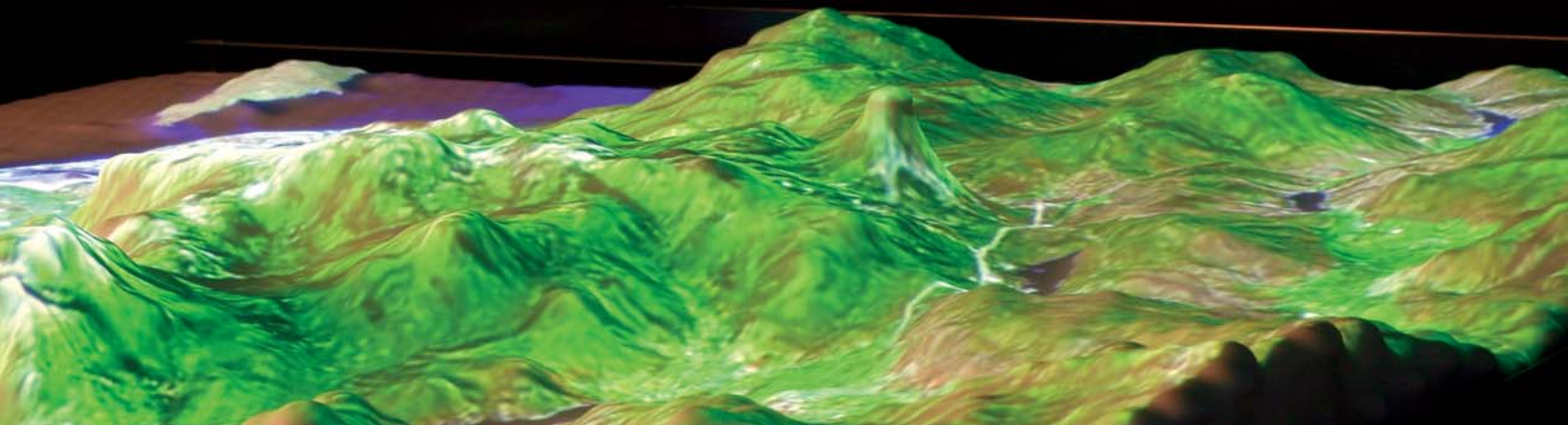


TerrainTable™



3-D Topographic Modeling and Visualization



For mission planning and operations, it is critical for decision-makers and strategic planners to have an in-depth understanding of the terrain surrounding an area of interest. Until now, this was accomplished with two-dimensional displays and paper maps. These tools depict elevation and terrain in terms of size, shape and orientation, forcing users to decode these elements to create a mental image of the terrain. For individuals with little experience reading maps, a three-dimensional model they can touch significantly enhances comprehension. To enable this, Northrop Grumman presents the TerrainTable,[™] giving users a way to rapidly visualize and interact with terrain in three dimensions.

The TerrainTable is a rapidly changing, topographic modeling and visualization tool that enables users to see and interact with a three-dimensional model of a geographic area. Using an array of vertical pins beneath a silicone skin, the table can create virtually any curved surface within an area 52" x 40", 6" high. When synchronized with a computer-controlled overhead projector, the TerrainTable makes a convincing topographical map, able to push up mountain ranges, drop down valleys and display real-time overlays on its surface.

Fast regeneration of the displayed terrain, combined with the ability to overlay data such as 2525B symbology, sensor data and target and asset tracking turns the TerrainTable into an instant situational awareness tool, displaying critical information to the user. The TerrainTable's robust capabilities support a wide variety of uses, including terrain analysis, mission planning, oil and gas field visualization, civil engineering and real estate development, to name a few.

Bringing real-world topographical visualization to planners and decision makers, the TerrainTable enables rapid comprehension and increased fidelity to any activity requiring in-depth understanding of terrain.

Features

- ✓ High-resolution projection display
- ✓ Rapid regeneration of new terrain models
- ✓ High-fidelity pin resolution
- ✓ Compatible with the TouchTable[™]
- ✓ Compatible with ESRI's ArcGlobe software

Table Specifications

- ✓ Table Dimensions: 60" (L) x 47" (W) x 39" (H)
- ✓ Pin Field: 52" x 40" (approx.)
- ✓ Pin throw height: 5.75"
- ✓ Pin resolution (pin to pin): 0.72"
- ✓ Reset time: < 15 seconds

Northrop Grumman – A Leader in Visualization and Collaboration Solutions

Northrop Grumman is at the forefront of leading-edge visualization and collaboration solutions for customers in the intelligence community and Departments of Defense and Homeland Security. Its innovative solutions include advanced visualization, GIS analysis and engineering tools as well as system design and integration services. Northrop Grumman is defining the future in its Advanced Capabilities Demonstration Lab in Reston, Va., as well as its Futures Lab in Glendale, Calif., where it is developing the next generation of visualization and collaboration solutions.

For more information, please contact:

Northrop Grumman Mission Systems
14330 Sullyfield Circle
Chantilly, VA 20151
703-633-2805
sean.love@ngc.com

www.northropgrumman.com

© 2005 Northrop Grumman Space & Mission Systems Corp.
TerrainTable is a trademark of Northrop Grumman Corporation.
Patent pending.
All rights reserved.
ESRI and ArcGlobe are trademarks of Environmental Systems Research Institute, Inc.
RS1180705

NORTHROP GRUMMAN
DEFINING THE FUTURE[™]